

Bow Recreation



Summer Day Camp

Camp Days

*June 26—Aug. 3
M, W, F—9:00-4:00
Early Care 7:45-9:00

* Camp Dates subject to change

Crafts, Sports,
Games,
Special Events,
Field Trips and more!

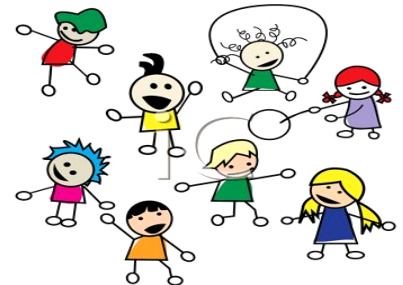
Trip Days
Tuesdays
&
Thursdays

TRIPS

- Trips are held on Tuesdays & Thursdays
- To register for trips, participants must be registered as a camper or
- Those entering Grades 7-12 may register for Teen Trips- \$30 Reg. Fee, plus additional trip fees.

CIT Applications will be available Wed., April 11th

Registration Day
Wednesday, April 4th
5:00pm-6:30pm



At The Bow Community Building

SUMMER CAMP DETAILS

- * *Registration is ONLY open to those residing in the Town of Bow.*
- * *Registration is on a first come, first serve basis.*
- * *Registrations will NOT be taken prior to registration day.*
- * *Any registrations dropped in the secured drop box may not be processed until the end of the day and does not guarantee a spot in the program.*
- * *Registration will stay open until program is full.*
- * *Once a program is full, participants will be wait listed.*

- ◆ Grades 1-7 (Fall 2018)
 - ◆ Camp is held Mondays, Wednesdays, & Fridays
 - ◆ Trips—Tues./Thurs
 - ◆ Dates: *June 26—August 3 No Camp July 4th
 - ◆ Time: 9:00 am-4:00 pm
 - ◆ Fee: \$325.00 per child for 6 week camp
 - ◆ Early Care provided from 7:45 am-9:00 am
- Fee: \$45.00 camp session or \$4.00/day

There are no refunds or credits for Summer Camp, Early Care, CIT or Trips